

## Project Reference

Project / Job	Quantity	Customer
1 Built-up Beam	200 t	Mitsui
2 Light weight structure (PEB, Chassis)	310 t	SSI, TCR, NTT
3 Antenne Parabolique (Dia 40m.)	500 t	MT Mechatronic
4 Rail Steel Bridge (6, 12, 30, 35, 40, 50, 60, 70m.)	1,850 t	SRT, KSC
5 Fan Casing	360 t	Howden
6 Air Preheater Casing	130 t	Howden
7 Pisanulok Steel Bridge (Arch)	350 t	Department of Rural Roads
8 Pressure Part	200 t	Parker, TES Multi Phase, Daramic, TCRSS
9 Machine Structure	2,700 t	ITD, SMS, Danieli, POSCO, SSI, Momentive
10 Pressure Piping	1,000,000 DB	Toyo-Thai, Siam Kraft, SSI, ESSO
11 Building Structure	2,750 t	SCG Logistic, SKIC, Thai Central Chemical, SS Green, Thai Crane Paper
12 Duct & Stack Work	330 t	SS Green, SCG, Power Prospect



1. Built-up Beam



2. Light Weight Structure



3. Antenne Parabolique



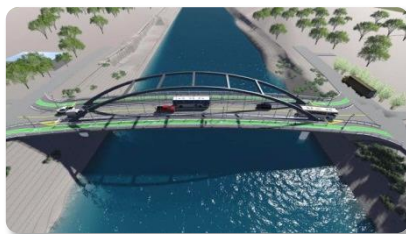
4. Rail Steel Bridge



5. Fan Casing



6. Air Preheater Casing



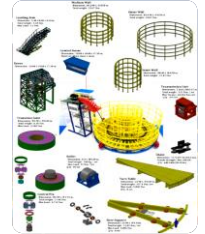
7. Pisanulok Steel Bridge



8. Pressure Part



9. Mechanical Structure



10. Pressure Piping



11. Building Structure



12. Duct & Stack Work



Head Office: 16 K&Y Building, 5th Fl., Surasak Rd., Silom, Bangrak, Bangkok 10500 Thailand

Factory: 9/1 Moo 4, Ban Klangna—Yaiploy Rd., T.Maerumphueng, Bangsaphan, Prachuapkhirikhan 77140 Thailand

Contact:  
Mr. Yongyut Yambang  
✉ yongyuty@wce.co.th  
☎ +66 92-271 5987  
www.wce.co.th

S-SMD-01 Rev.A0 SF-01



# Fabrication Services

## Company Background

West Coast Engineering Co., Ltd.(WCE) was established in 1999, with a paid-up capital of 120 millions baht. An affiliated company of Sahaviriya Steel Industries Public Company Limited (SSI), one of Thailand Leading manufacturers of hot rolled coils for the automobile, cold rolling, electrical & home appliance, steel coating industries, pipe, gas cylinder, checkered plate and cut sheet.

WCE provide quality engineering services including machinery engineering, maintenance management, steel structure and fabrication and Engineering Procurement & Construction. WCE looks forward to achieving a leader of manufacturing engineering service center according to international standard.



## Place of Business

### Headquarter Bangkok:

16 K&Y Building, 5st Floor, Surasak Road, Silom, Bangrak, Bangkok 10500

### Workshop:

9/1 Moo 4 Banklangna - Yaiploy Road, T.Maerumphueng, A.Bangsaphan, Prachuapkhirikhan 77140, Thailand

## Products and Services

### 1. Maintenance Service

- Long Term Contract Skilled Supply Services
- Mobile Skilled Supply Services
- Mobile Machine Services

### 2. Machinery Service

- Overhaul Service
  - Hydraulic Cylinder (Max ID at 400 mm)
  - High Pressure Pump (Up to 300 Bar)
  - Motor AC (380 V.- 6.6 KV. Up to 1,200 KV.)
  - Motor DC (600 V. Up to 400 KV.)
- Part Supply (Maintenance and Production)
- Trading (Roll, Welding Rod, Oil, etc,..)

### 3. Fabrication Service

- Steel Structure
- Heavy Equipment and Infrastructure
- Mechanical Equipment
- Pressure Part

### 4. Project Service

- Erection / Installation
- EPC (Automation, Water Treatment, Solar, ASRS, Robotics, etc,..)

### Employees 871 Men

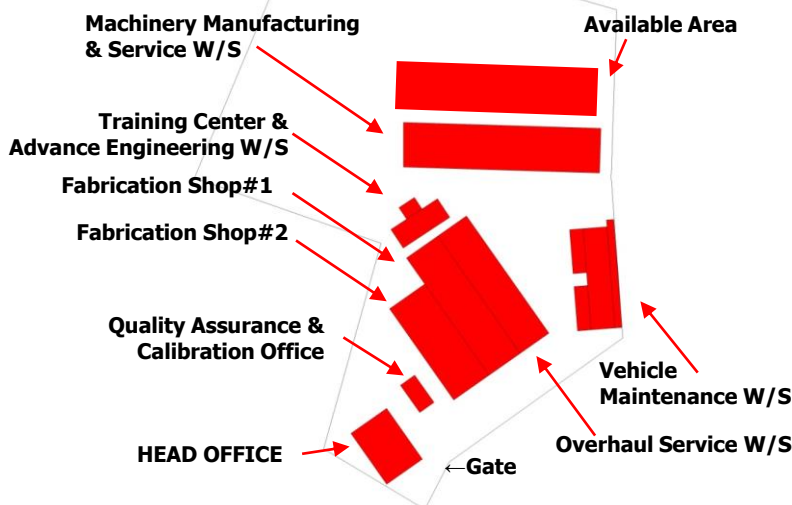
- Managements 33 Men
- Engineers 70 Men

### Working Area; Bangsaphan

Fabrication Shop#1	2,000 sq.m
Fabrication Shop#2	1,650 sq.m
Outdoor	5,400 sq.m
Paint Shop	800 sq.m
Available Area	15,000 sq.m
Fabrication Shop#3	1,400 sq.m
Fabrication Shop#4	1,400 sq.m
Yard Area at Port	12,000 sq.m
Repair & Overhaul	2,000 sq.m
Machinery	4,000 sq.m
Vehicle	1,800 sq.m

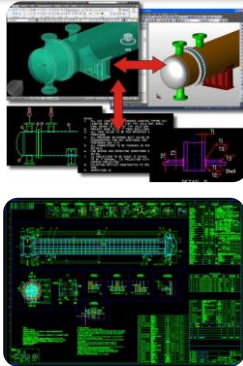
### Working Area; Non-Bangsaphan

Bangpakong Area	20,000 sq.m
Chonburi Area	12,000 sq.m



*" We provide our industrial clients fabrication services for structural and mechanical from engineering design, manufacturing, installation and after sales service . "*

## Engineering Design



## Manufacturing



## Installation & After Sales Service



## Fabrication Capabilities

**Scope of Supply Space (71,650 sq.m)**

Engineering Design, Manufacturing, Installation & After Sales Service  
Bangsaphan Area 39,650sq.m, Non-Bangsaphan Area 32,000sq.m

### Steel Fabrication Capacity:

• Steel Structure	650	t/month
• Machining Structure	400	t/month
• Duct Work	60	t/month
• Pipe Work	1,000	DB/month
• Pressure Vessel	50	t/month
• Built-up Beam	1,000	t/month

*" Our capability and range of services we provide is highly diversified and experienced work force. Partnering with outside contractors enables Fabrication Services to be more flexible in the capabilities it offers to its stakeholders. "*

## Alliance Capacity (>1,500 t/month)

• Bangsaphan Area	5 facilities	> 1,000 t/month
• Bangkok and Surrounding Area	2 facilities	> 500 t/month

## Machine and Equipment

### In Steel Fabrication and Built-up Beam Building

▪ Gantry crane (20t, 15t)	2	▪ Band saw cutting (W1.50m., H1.20m.)	2
▪ Overhead crane (45t, 10t, 5t)	10	▪ Shot blast machine	2
▪ BH Assembling & Straightening M/C	1	▪ Radial Drilling Machine	3
▪ Submerge Arc Welding M/C	4	▪ Ultrasonic test	2
▪ Plate Beveling machine	1	▪ Elcometer Blasting Equipment	1
▪ Drill Grinder	1	▪ Infrared Thermometer	1
▪ Hydraulic Press Break	1	▪ Taper Gauge	1
▪ Scallop M/C	1	▪ Plate Bending Machine (W3.0, 4.0m., Thk.15mm.)	2
▪ Portable Cutting M/C	2	▪ FCAW Machine	2
▪ CNC Plasma Cutting Machine (3m.x18m.)	1	▪ Punching Machine (35t)	1
▪ CNC Plasma Cutting Machine (2m.x6m.)	1	▪ Magnetic Drilling Machine	2



CNC Plasma Cutting Machine



Plate Beveling Machine



Assembling & Straightening Machine



Sub-merge Arc Welding Machine

## Machine and Equipment

### In Machinery Building

Machine

Accuracy/Capacity

- CNC Machine Center (HARTFORT) 0.02(mm)
- CNC Machine Center (OKUMA) 0.02(mm)
- CNC Machine Center (WEIDA) 0.02(mm)
- CNC Boring Machine (TOSHIBA) 0.004/500(mm)
- CNC Boring Machine (WEIDA) 0.015(mm)
- CNC Lathe Machine (FULLAND) 0.02(mm)
- CNC Lathe Machine- Chaina- 0.01 (mm)
- CNC Vertical Boring and Turning (Youji) 0.02(mm)
- Floor-type Milling-boring (Chaina) 0.01 (mm)
- Boring TP611 (WEIDA) 0.02(mm)
- Milling Bed Type (Fortworth) 0.02(mm)
- Milling Knee Type (Pinnacle) 0.02(mm)
- Universal Milling (HO CHUN) 0.02(mm)
- Lathe (NAMAZAKI) 0.02(mm)
- Lathe (WINHO) 0.05(mm)
- Lathe (RUN MASTER) 0.02(mm)

Machine

Accuracy/Capacity

- Lathe (SHENYANG) 0.02(mm)
- Lathe (DENVER) 0.1 (mm)
- Lathe (SOFIA) 0.1 (mm)
- Lathe (CLOVIS) 0.1 (mm)
- Lathe -DELONG 0.05(mm)
- Surface Grinding (BLB) 0.005(mm)
- CNC Rotary Grinding (DOWELL) 0.005(mm)
- Universal Cyl. Grinding (TOS HOSTIVAR) 0.005(mm)
- Universal Cyl. Grinding (SMTW) 0.005(mm)
- Shaper (BUTLER) 0.05(mm)
- Slotting (CABE) 0.1 (mm)
- Radial Drilling (TOS) 0.1 (mm)
- Radial Drilling (CHAINA) 0.1 (mm)
- Overhead crane (ABUS) 5 (t)
- Overhead crane (ABUS) 32 (t)



Vertical Lathe M/C



CNC Lathe M/C



CNC Boring M/C



Boring(Floor type) M/C

## Qualification

### Standard/Certificate:

ISO900, ISO14001, TIS18001/OHS18001, IEC17025/TIS17025, JSCA M-Grade Steel Structure

### Quality System:

AWS D 1.1 and Quality Assurance

### Certified Man-Power

- Welding Engineer 6
- Certified Welder (JSCA M-Grade) 6
- Certified Welder (EN1090) 47
- QA NDT UT,MT,PT,VT 21
- Manual Arc Welding Technician 16
- Electric Arc Welding Technician 25
- Lathe M/C Operator 15
- Mechanical Technician 7

## Certificates & Accreditation

### ASME: U, S, R and PP Stamp

Manufacture of pressure vessels at WCE and field sites controlled by WCE. (not cover impregnated graphite)

Manufacture and assembly of power boiler at WCE and filed sites controlled by WCE.

Metallic repairs and/or alternations at WCE and extended for filed repairs and/or alterations controlled by WCE.

Fabrication and assembly of pressure piping at WCE and filed sites controlled by WCE.

### JSCA M-Grade Steel Structure

Steel structure building of the thickness of carbon steel plate for grade 400N and 490N ≤ 40mm., except the thickness of carbon steel plate for through diaphragm (without beveling) for grade 400N and 490N ≤ 50mm.

